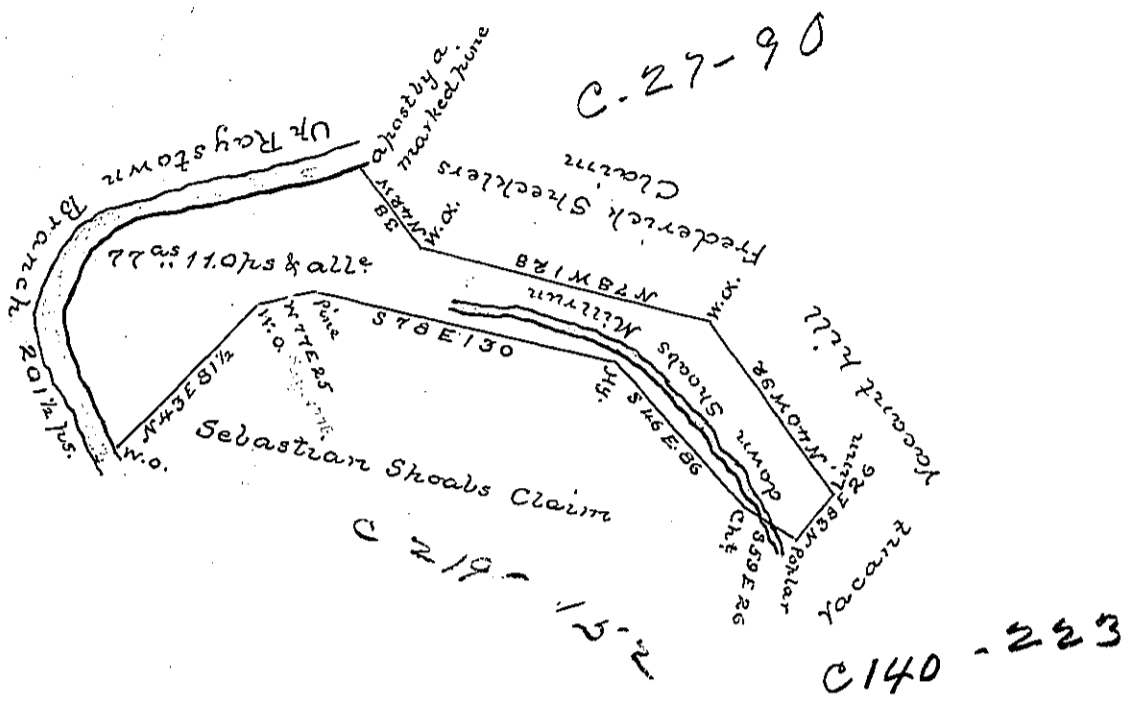


The course & Distance

Up the River

S 65 W	71
N	3 1/2
S 48 W	24
S 4 E	50
S 46 E	22 to the W.O.
20 1/2	



Situate on the East side of Raystown branch of Juniata river & on Shoabs Mill run in Hopewell Township Huntingdon County Survey'd 25<sup>th</sup> April 1792 to James Reyland on his Warrant dated 16<sup>th</sup> January 1792 containing Seventy seven acres one hundred & ten per cent & all of six per cent for roads, &c.

John Canan W. S.

David Brodhead Esq. S. G.

IN TESTIMONY that the above is a copy of the original remaining on file in the Department of Internal Affairs of Pennsylvania, made conformably to an Act of Assembly approved the 16th day of February, 1833, I have hereunto set my Hand and caused the Seal of said Department to be affixed at Harrisburg, this

thirtieth day of October 1885.

J. Simpson Africa,  
Secretary of Internal Affairs